



# ST MARGARET'S

SCHOOL



04	An Education for Life
06	The Nursery
07	Junior School Ages 4 – 11
11	Senior School Ages 11 – 16
12	Sixth Form Ages 16 – 18
14	Boarding
15	Co-curricular
18	Exam Results and University Destinations
20	Scholarships
21	Bursaries
22	Our Campus
24	Timing of the School Day
25	Coach Routes
26	Termly Fees From September 2025
27	Entry to St Margaret's School

# Contents



# An Education for Life

## Lara Péchard Head



Welcome to St Margaret's School. We are a co-educational independent day and boarding school in Hertfordshire. We have a reputation for supporting pupil wellbeing, whilst bringing on academic talent and progress. Our pupils go on to a range of destinations including some of the top Russell Group universities, American universities, as well as competitive apprenticeships.

We are extremely fortunate with our location, as we are based inside the M25 and within a short distance from all the major airports, yet set in over 60 acres of beautiful grounds. Our site benefits from being green, with historic buildings and modern facilities. We are a family school; a through school offering education from 2 to 18. Teaching staff are dedicated to teaching and enjoy working here. Relationships are a strength. Alumni often comment on how happy their time was here and the friendships they forge are often for life.

We often say that there is no typical St Margaret's pupil, and this really is true. Our pupils in recent years have gone on to careers in medicine, law, engineering, theatre, architecture, design, working in emerging markets and science. We pride ourselves on working for and with individuals. It is important to us that all pupils feel valued at all stages.

Whether you are looking at entry into Nursery or for Sixth Form, there is a buzz around the School. Whilst there is an emphasis on academic challenge, there is also an impressively extensive offer. Pupils benefit from a wide ranging co-curricular programme that encourages breadth, enjoyment, self-reflection and excellence. Sport, drama, music, art and dance, alongside Duke of Edinburgh, are big pillars of our co-curricular offer. Service and leadership are also key areas of school life.

The best way to experience St Margaret's is by booking in for an open day or tour. Here you will meet the pupils and staff, see warm relationships that encourage our pupils' confidence and growth. So, come and visit and see for yourself that this is a beautiful school, with a culture of learning, kindness and purpose.





# The Nursery

The Nursery at St Margaret’s is a term-time nursery for children aged 2 years and above, providing care and early education during their pre-school years, before they start formal schooling in our Reception classes.

Children immerse themselves in play-based learning in beautiful, light and spacious spaces, allowing them to create, play and explore the world around them.

## The Curriculum

The children follow the EYFS curriculum. We work with the individual at the heart of our practice, supporting children’s next steps across all areas of the curriculum. The curriculum focus areas are communication and language, physical development, personal, social and emotional development, literacy, mathematics, understanding the world and expressive arts and design.

Alongside these sessions, the children take part in our Little Linguists’ lessons, music, physical education, including gymnastics, as well as spending as much time outside as possible.

Children also focus on the skills and curriculum, including phonics and maths, that will prepare them for Reception at St Margaret’s.

## The Day

The core day is 8am to 4pm, with drop off available from 7:30am and wraparound care available from 4pm to 6pm, (5pm on Fridays); these hours are bookable as a chargeable extra.

## The Sessions

One session equates to one half-day, with 10 sessions available over the week. There is a minimum number of 8 sessions for children in Pre-Reception (one year from starting Reception), with the minimum number for Lower and Upper Nursery set at 4 sessions.

In the term after a child has turned 3, they may be eligible for 15 hours funding. If families are accessing funding for 15 hours, we ask that children attend The Nursery for a minimum of 25 hours per week.

## Admissions

Children will be able to join The Nursery once they have turned 2 years old. This will mean children will be able to start during a term, at a time that is convenient for the family and subject to space availability.

## Uniform

Children in Lower and Upper Nursery are able to wear their own clothes, but many families do choose to purchase the optional navy sweatshirt and polo shirt.

We ask that children in Pre-Reception wear uniform; this is a tracksuit in the winter months and a summer dress or navy shorts and polo shirt in warmer weather. Children should have indoor shoes and outdoor shoes, which can be either trainers or wellies.

## Food

We cater for a range of dietary requirements. During your first meeting with the Nursery Manager, we will learn more about how your child eats and how the food should be prepared.

## Communication

We prioritise communication with parents at our nursery. We use a dedicated app, so parents can stay connected with their child’s daily activities, progress updates and upcoming events, ensuring they are always informed and involved in their child’s learning journey. We uphold and value an open-door policy, inviting parents to visit and engage with our staff at any time, recognising that open communication leads to a deeper understanding of each child’s needs and strengths.



# Junior School

## Ages 4-11

St Margaret’s Junior School has strong foundations built on the School’s fine roots and tradition, alongside a modern and relevant curriculum. The building is equipped with bright, inspiring classrooms. Children have lessons across the wider school, in our purpose-built music block, performing arts centre, art studio, swimming pool and Sports Centre.

## The Curriculum

The Junior School has an engaging curriculum and high-quality teaching. The children are happy and equipped for a changing world, and they move on to the Senior School happy and confident.

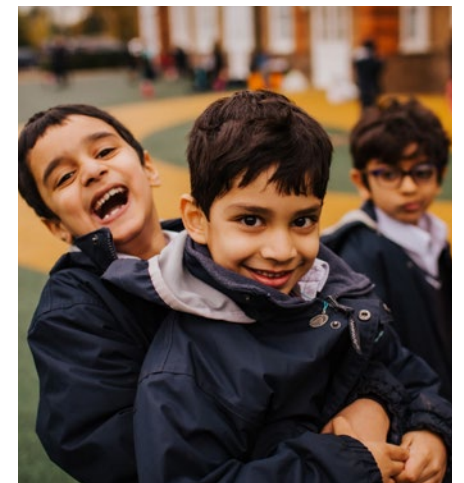
Our youngest learners start at St Margaret’s in our EYFS, where children can join our Nursery or Pre-Reception class before they start Reception.

The EYFS at St Margaret’s is underpinned by the best practice from the EYFS curriculum. Our key resources in our planning are our individual children; we reflect on a child’s journey, are present with them in their learning and plan to support their next steps.

Our children in Y1 and Y2 build on the foundations they have secured in their early years. Our considered curriculum focuses on supporting and stretching the pupils’ learning in core subjects, while offering them broad curriculum experiences in STEM, art, languages, drama and philosophy.

In Y3 and Y4, pupils concentrate on developing robust skills across various subjects. The teaching and learning opportunities ensure children make progress in all areas of their learning. The curriculum is designed around engaging themes and high-quality texts, the academic focus ensures progress and attainment is higher than national standards.

As pupils progress to Y5 and Y6 they continue to build upon this broad and balanced curriculum, placing a strong emphasis on core skills to deepen their knowledge and understanding across subjects. Alongside traditional methods, pupils are encouraged to develop strategies for independent study, facilitating their growth and autonomy in learning. Children are equipped with a toolkit of excellent maths, English, computing, verbal and non-verbal skills, alongside public speaking, emotional intelligence and problem-solving skills, which they continue to build on as they move up into the Senior School.





Pastoral Care

Pastoral care is a key part of what makes St Margaret's the right choice for your child, we know the children and provide a supportive environment where they feel happy and secure and want to learn and do well.

The children in the Junior School understand and value the opportunities open to them and consider themselves to be lifelong learners. The voice of the pupil is key, children are encouraged to share their thoughts and feelings through our Junior School council, as well as during informal opportunities where children from the earliest age are confident to come and talk about any concerns and suggestions they have with each other and staff.

Our dedicated staff team collaborates closely to ensure the happiness, care and progress of all our pupils in our safe environment. This team, alongside the Form Tutors and Heads of Year, includes our School Nurse, Designated Safeguarding Lead and Pastoral Deputy Head.

Joining The Junior School

Our main points of entry are via The Nursery and Reception. However, at times, we also have occasional places across the School and would be delighted to hear from families that are interested in joining St Margaret's.

Once families have visited the School for a tour, registered children will be invited for an age-appropriate assessment and taster session.

Our Y6 pupils automatically have a place in the Senior School if they have attended the Junior School since before Y5. All pupils at the Junior School sit the Senior School entrance exam, attend an interview and many choose to apply for our scholarships. The process ensures the children feel they have earned their place. Well planned transition activities are organised including a special dinner with the Head of Year 7, so children feel happy and settled before September starts.

Wrap Around Care

We provide wrap around care from 7.30am- 6pm (5pm on Friday). Breakfast club and our After School Care for our youngest children is in their dedicated learning environment and outdoors, whilst our Y2 - Y6 children complete homework or supervised study under the care of a teacher. At 5pm the children in ASC come together for further homework, board games and outside play before they are picked up.

Clubs

We offer a range of activities in the Junior School for pupils from EYFS to Y6, including activities such as choir, natural history, Lego, sewing, football, swimming, netball, sketch club, chess, tales and treasures, cricket, netball, taekwondo and many others.

Communication

Communication is incredibly important to us, we know the importance of an open dialogue with parents and we share information regularly through weekly newsletters.

We create various touch points for families to see a child's learning over the year, through a class assembly, an open-door event, a breakfast, or in our more formal parent-teacher meetings.

We hold regular talks for parents on a variety of topics and believe in a strong partnership between home and School.







# Senior School

Ages 11 – 16

In the Senior School, our aim is to provide an all-round education which is both challenging and flexible. We nurture St Margaret’s pupils to become confident, courteous and considerate students who enjoy life and love learning. All benefit from superb teaching by committed subject specialists, underpinned by excellent pastoral care.

Small classes, a beautiful spacious campus and optional supervised study each evening are some of the distinctive elements in a St Margaret’s education.

### Years 7 – 9

The curriculum is broad and balanced to allow the strengths of different individuals to be discovered and fostered. Regular educational visits and opportunities for residential trips extend knowledge and deepen friendships. A wide variety of co-curricular clubs and activities are also available both after school and during the lunchtime period.

### Years 10 – 11

Pupils take their GCSEs and are encouraged to choose varied subjects to maintain the breadth which is a mark of their earlier education. High levels of teacher contact time underpin academic success and pupils go on to achieve grades that lead to successful university applications, whilst having time to pursue hobbies and interests and develop those life skills essential for success in later life.

### Quality Resources

Our music centre build, along with our well equipped performing arts studio and performance space in the main hall, ensure our pupils can enjoy the arts throughout the curriculum. Sports are a key part of life at St Margaret’s: in recent years we have opened a dance studio space and a new gym. Alongside our all-weather pitches, Sports Centre and large grounds, these facilities ensure pupils can enjoy a wide range of sports and activities. Our library provides a popular study centre for pupils.





# Sixth Form

Ages 16 – 18

With over twenty A-Level subjects to choose from, St Margaret’s Sixth Form students have access to a broad range of inspiring and challenging courses.

Over a two year period, Sixth Form students become independent, curious and aspirational, developing in-depth passions and interests. At St Margaret’s Sixth Form, students mature into adults with a set of values, practical skills and the confidence that will stand them in good stead for life.

Our outstanding post-18 pathways preparation programme enables students to learn more and prepare for the next steps into adult life, be that the world of higher education, apprenticeships or entry level jobs.

Sixth Form students take advantage of the wide range of co-curricular activities and leadership opportunities on offer and everyone responds positively to being treated as adults and having greater freedoms and opportunities to assume responsibility.

## Facilities

- Spacious study rooms with individual study areas
- Common room with kitchen
- UCAS and Careers Office
- Sixth Form parking
- Sports Centre with swimming pool, gym and games facilities.

## First Class University Preparation

- Visits to universities, careers and apprenticeship fairs
- Interview and entrance examination practice
- Enrichment programme: students are shown how to write personal statements and submit winning applications.
- Weekly General Studies programme with external speakers
- Gap year education and advice
- Individual and tailored support before, during and after applications
- Bespoke careers guidance and access to alumni networking events.





# Boarding

The School has had a great tradition as one of the oldest boarding schools in the United Kingdom. We take great pride in this fact as it not only demonstrates our wealth of experience, but also our success in ensuring pupils are well looked after and, above all, are happy here.

In recent years the School has changed in shape with the day population seeing considerable growth. In light of this, Governors have taken the decision to see a phased withdrawal to our boarding offer and boarding will close at the end of the summer term in 2027. This will enable all pupils currently in the School to complete examination courses and to prepare well in advance for this change. Many of our boarders will stay on in the day population.

During this time, we will continue to offer a caring and supportive environment for full, weekly and flexi-boarders into our boarding house. The boarding house is situated on the upper floors of the Waterhouse building and is available from Y7 onwards, with separate accommodation for boys and girls.

There is an emphasis on ensuring warm support so that boarders feel looked after. Their schoolwork is a priority, however, there is a full programme of evening, as well as weekend activities. Boarders benefit from our setting, sporting, music and art facilities, as well as the green space of our 60 acre rural site. Based just 20 minutes from central London, our boarders also benefit from trips and activities in the capital.

## Full Boarding

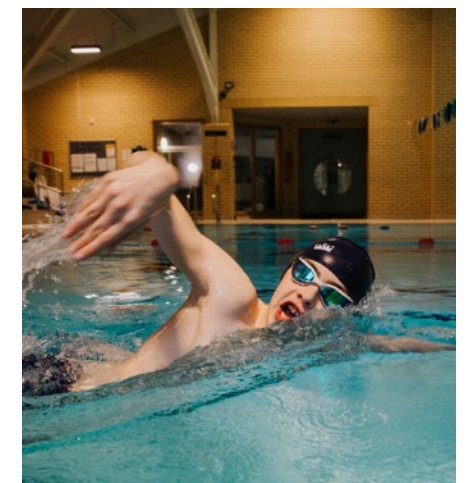
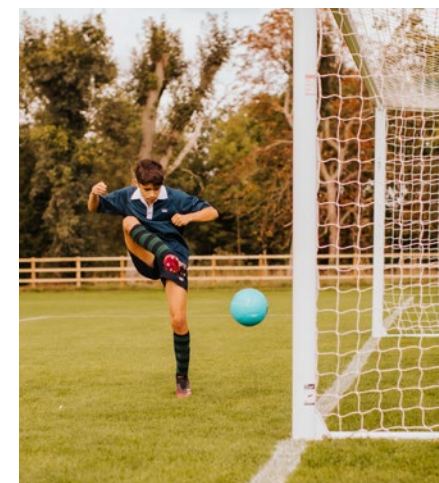
Round the clock care at all times except the long school holidays, half-term breaks and the May Bank holiday weekend. There is always the flexibility for pupils to go home for occasional weekends to fit in with family events. All of the extra activities and excursions are included in the full boarding fee.

## Weekly Boarding

Means that a pupil has their own bed in school which can be used up to 5 nights a week by arrangement. Weekend stays and all excursions are available to weekly boarders for a supplementary charge.

## Flexi or Occasional Boarding

Flexi-boarding is popular at key points of the year. This can take the form of one or two nights a week on a regular basis (up to 10 nights per term), just the odd night here or there, or a week or two during the year. These options are all helpful when parents are away dealing with business or family matters, or when pupils have particularly time-consuming commitments at School such as play rehearsals or preparation for public examinations.



# Co-curricular

At St Margaret's there are an abundant amount of opportunities to shine, not just in the classroom, but also outside of it. Our vast choice of co-curricular activities form a core part of school life, so much so that the school week is organised to accommodate a broad and diverse enrichment programme. Co-curricular is embedded in school life, as part of the timetable and during lunchtimes, as well as before and after school.

Every day, pupils from our EYFS classes through to Sixth Form broaden their experiences and challenge themselves by taking part in these activities. There are more than 35 choices in our timetabled enrichment slot alone, and with more than seventy co-curricular options in the Senior School, and more than thirty in the Junior School, the co-curricular offer is a large part of the enriching experience at St Margaret's.

From academic clubs to mountain biking, cricket to dance, chess to speech and drama, and Model United Nations to coding club, pupils are encouraged to push their limits and discover their passions, which often become part of their adult lives.

Volunteering and student voice is very important to us and students are regularly asked to give their time in order to support the School's local and global community. The whole School takes part in service days in the summer and to celebrate St Margaret's Day.

## Peripatetic Music Lessons

Peripatetic music lessons are 30 minutes long and take place during the school day, with some availability for fixed lessons before and after school. Taught in blocks of 10 and arranged on a rotational basis to ensure students don't miss the same lesson, the cost for 10 lessons is £275. Pupils can select from a wide range of instruments including percussion, drum kit, piano, woodwind, brass and strings, as well as singing lessons.

## Peripatetic LAMDA Lessons

Peripatetic LAMDA lessons are 30 minutes long and take place during the school day, with some availability for fixed lessons before and after school. Junior School pupils can opt for individual, paired or group lessons, with Senior School pupils taught either individually or paired. We also offer the Introductory Graded Exams (Stage 1 to 3) for our younger pupils which are designed to build confidence in communication and performance through poems, rhymes and role play. Further information including lesson fees is available on the website.







# Exam Results and University Destinations

Our comprehensive post-18 pathways education programmes at Sixth Form ensure that students make well informed choices and undertake well supported preparatory activities for their adult lives. Though the vast majority of students go on to university from St Margaret’s, students are increasingly opting for more modern routes through degree apprenticeships and overseas courses. Students are well supported in their preparation for these courses.

## Case Studies



### Safiya & Mahima

After a laboratory-based workshop with the UK Health Security Agency sparked an interest in science-based careers, Safiya and Mahima went on to achieve outstanding A-Level results. Safiya earned a clean sweep of 3 A\* grades in Biology, Chemistry, and Spanish, while Mahima secured 2 A\*s and 2 As in Biology, Chemistry, Geography, and Maths. Both students went on to accept their first choice offers to study Biochemistry at King’s College London.



### Faith

Achieving 3 A grades in English Literature, French and History A-Levels, Faith secured a place at Balliol College, Oxford, to study French; and as a senior prefect, Faith always set an excellent example for others to follow. Passionate about both French and film studies, in her Oxbridge sessions Faith could always be relied upon as the unorthodox, lateral thinker.



### Tyler

Tyler studied A-Level Business Studies, Computer Science, and Psychology. Demonstrating strong independence and a natural aptitude for software and technology, he quickly distinguished himself as a standout student and a credit to St Margaret’s. Before results day, Tyler was offered a position in cyber security — a testament to his skills and drive.



### Isra

Isra studied A-Level Biology, Chemistry, and History. Whilst an exceptional historian, Isra’s passion was in the sciences and medicine, and after securing work experience in an NHS virology lab, it was clear that she would go on to pursue a career in a medical field. Her dedication and hard work were rewarded with a place at University of Bristol to study Medicine.





# Scholarships

At St Margaret’s scholarships are awarded in recognition of outstanding achievement or promise, and the programme is built on the offer of opportunity and experience, rather than fee remission.

Our programme focuses on the core attributes of scholarship: creativity, commitment, resilience, intellectual curiosity and perseverance, and scholars are expected to display these characteristics in order to remain within the programme. Scholars are closely monitored throughout their time in school with termly points of contact, regular feedback on their progress and reviews of their scholarship evidence trackers.

By providing stimulating opportunities to learn well beyond the curriculum, the scholarship programme focuses on nurturing and fostering the creative talents of individual pupils, and candidates are encouraged to consider applying for a scholarship solely on the basis of their passion, dedication and commitment.

Academic scholarships are available at 11+, 13+ and 16+. Applications for 11+ and 13+ entry will automatically be considered for an academic scholarship on the basis of success in the entrance examinations and interviews that take place in the autumn/winter of the preceding academic year of entry.

Scholarships are also awarded on the basis of assessments in: Art, Dance, Drama, DT, Music, Sport and STEM (Science, Technology, Engineering and Mathematics) at 11+, 13+ and 16+ entry points. At 16+, specialist scholarships are also awarded for contribution to the St Margaret’s community.

Pupils can apply for one specialist scholarship along with an academic scholarship. All scholarships are reviewed annually. There is one application form for all scholarships (including the Sixth Form academic scholarship) which can be downloaded from the website.

Please note that we will only consider scholarship applications from candidates who are registered for entry to the School.

**If you require financial assistance please refer to the section on bursaries. Simultaneous applications may be made for both a scholarship and a bursary.**

## Scholarships Available

11+	Academic	Art, Dance, Drama, DT, Music, Sport & STEM
13+	Academic	Art, Dance, Drama, DT, Music, Sport & STEM
16+*	Academic	All subjects & Community Service

\*At 16+ candidates may apply for academic scholarships in two subjects



# Bursaries

St Margaret’s is committed to broadening access to the School. Within the resources available, means-tested financial support for the payment of school fees can be provided to parents/guardians of pupils who have been offered a place following the normal admissions and selection process.

Such support is known as a bursary which is awarded in the form of a discount of tuition fees payable, depending on the financial, compassionate or other pertinent circumstances of applicants.

Bursary awards are subject to repeat testing of parental means each year and may be varied upwards or downwards, depending on parental circumstances.

## The Bursary Application Process

### Step One

Parents seeking a bursary are required by 30 November for entry the following September to complete an application form which seeks to establish the financial circumstances of the household. The form, which requests details of income, expenditure and capital assets, must be accompanied by full documentary evidence. The completed forms together with the necessary documentary evidence, are to be submitted to the Director of Finance & Operations (DFO) at **finance@stmargarets-school.org.uk** normally at the time of registration but in exceptional circumstances prior to this. All people with parental responsibility (even if separated and one parent makes no contribution to living costs) must complete the form.

### Step Two

The DFO assesses all applications in order to establish the likely level of support which will be required in order to allow the child to attend the School and prepares a recommendation in accordance with the St Margaret’s School Scale of Awards which is considered with the Head. A joint recommendation is then reached.

### Step Three

After the recommendation has been presented to the Chairman of the Governors’ Finance and General Purposes Committee for consideration, the parents are then advised whether their child is to be offered a place at the School and of the bursary offer.

To find out more, please contact the Admissions Department at **admissions@stmargarets-school.org.uk**





# Our Campus



Timing of the School Day

September 2025 Timetable

Junior School		Senior School	
07:30 - 08:00 Breakfast Club			
08:00 - 08:25 School opens for early arrivals			
08:25 - 08:50	AM Registration	08:25 - 08:50	AM Registration
08:55 - 09:50	Period 1	08:55 - 09:50	Period 1
09:55 - 10:50	Period 2	09:55 - 10:50	Period 2
10:50 - 11:10	Break	10:50 - 11:10	Break
11:10 - 12:05	Period 3	11:10 - 12:05	Period 3
12:10 - 13:15	Lunch/Period 4	12:10 - 13:05	Lunch/Period 4
13:15 - 13:45	Outdoor Play	13:05 - 14:00	Lunch/Period 5
13:45 - 14:00	PM Registration	14:00 - 14:55	Period 6
14:00 - 14:55	Period 6	15:00 - 15:55	Period 7
14:55 - 15:55	Period 7 Y4,5 & 6	16:00 - 16:10	PM Registration
15:30 - 16:00	Staggered Dismissal		
16:00 - 17:00 Mon - Fri After School Care		16:15 - 17:00 Mon - Fri Supervised Study	
17:00 - 18:00 Mon - Thurs After School Care		17:00 - 18:00 Mon - Thurs Supervised Study	

\*Nursery will run 08:00 - 16:00 with parents able to drop off between 08:00 - 09:00 and pick up from 15:30 - 16:00



Coach Routes

St Margaret’s organises dedicated coach services for its pupils. In general, coach routes operate in Hertfordshire and North London. All buses arrive at St Margaret’s School at approximately 8:15am and depart promptly at 4:15pm; full timetables can be viewed on the website.

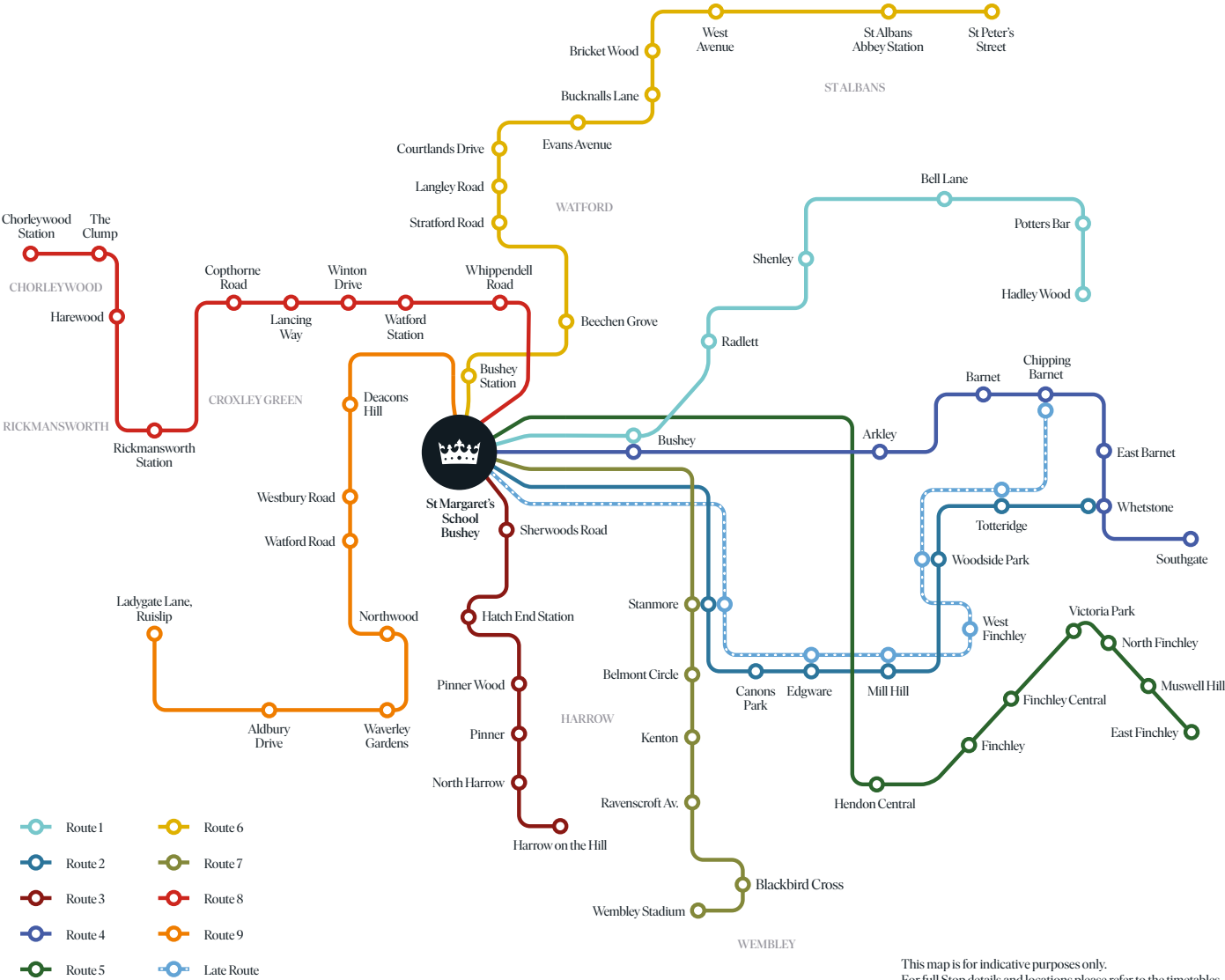
Coach routes are reviewed annually and we would encourage families to be in touch with Zeelo to register their interest in a new stop or route should the existing offer not meet their needs.

Coach Charges

- Annual return pass = £2,100
- Annual single pass = £1,050
- Single journey (ad-hoc booking) = £13.00

The coach service is only available to pupils in Y3 and above.

Routes are reviewed at the end of each academic year, please refer to the website for the latest information.



This map is for indicative purposes only. For full Stop details and locations please refer to the timetables.



# Termly Fees From September 2025

## Termly Fees

Fees displayed below are inclusive of any applicable taxes.

		Day	Weekly Boarding up to 3 nights	Weekly Boarding up to 5 nights	Full Boarding
Junior School	Nursery & Pre-Reception	£5,439 average per term	-	-	-
	Reception, Years 1 & 2	£5,993	-	-	-
	Years 3 – 6	£7,404	-	-	-
Senior School	Years 7 – 13	£8,874	£12,302	£14,525	£16,877
Supper with supervision (16:15 - 20:00)	Years 7 – 13			£19 per day	
Temporary/Occasional Boarding	Years 7 – 13			£76.50 per night	

## The following activities are available at an extra charge

Individual Music Lessons	Speech & Drama Junior School	Speech & Drama Senior School
£275 per 10 lessons	£140 per term (small groups)	£275 per term (individual lessons)
		£208 per term (paired students)

In the event of parents wishing to withdraw a pupil early, a full term's notice, in writing, must be sent to the Head, otherwise a liability will be incurred for a further term's fees at the appropriate boarding or day rate. A similar full term's notice is also required if you wish your child to change status from boarding to day. In the case of discontinuing extra paid activities, a full term's notice, in writing, must also be given where the activity is to be discontinued at the conclusion of the term.

## Deposit

A deposit of £1,200 (£2,400 for boarders) is required upon accepting a place at the School. The deposit is returned, minus any outstanding costs, at the end of the child's education at St Margaret's.

# Entry to St Margaret's School

## Key Dates in Admissions Process

## Entrance for September 2026

Occasionally places become available in other year groups. The Admissions Team will be able to advise on possible vacancies.

Age in years	4+	7+	11+	13+	16+
Closing Date for Registration and Scholarship Applications	1 October 2025	1 October 2025	5 November 2025	5 November 2025	28 February 2026
Entrance Assessment	17 October 2025	17 October 2025	17 - 21 November 2025	17 - 21 November 2025	Not applicable for UK pupils. Overseas students will be advised by Admissions
Interviews	17 October 2025	17 October 2025	17 - 21 November 2025	17 - 21 November 2025	Ongoing
Offer Letter will be posted by	Within 10 days of assessment and receipt of school reference	Within 10 days of assessment and receipt of school reference	No later than 31 January 2026	No later than 31 January 2026	Within 10 days of assessment and receipt of school reference
Written Acceptances to reach St Margaret's School	Within 2 weeks of receipt of offer	Within 2 weeks of receipt of offer	No later than 5 March 2026	No later than 5 March 2026	As per the offer letter

Children can start in The Nursery from the day they are two years old. There are three academic year groups in The Nursery, with Lower and Upper Nursery, and our Pre-Reception class for children who are starting Reception the following year. Entry for our Lower and Upper Nursery is based on capacity and we recommend that families get in touch early as demand for space is high. Nursery assessments cannot take place before a child is 18 months old, but please do be in touch if you require confirmation of a space earlier than this. Entry for Pre-Reception is automatic from our Upper Nursery. Families looking to join in-year will be asked to complete the 4+ process as part of the Pre-Reception entry assessment.







[www.stmargarets-school.org.uk](http://www.stmargarets-school.org.uk)

Merry Hill Road, Bushey  
Hertfordshire, WD23 1DT  
United Kingdom

+44 (0)20 8416 4400  
[schooloffice@stmargarets-school.org.uk](mailto:schooloffice@stmargarets-school.org.uk)

If you would like a tour of the school  
or need any further information please  
contact the Admissions Team.

+44 (0)20 8416 4400  
[admissions@stmargarets-school.org.uk](mailto:admissions@stmargarets-school.org.uk)